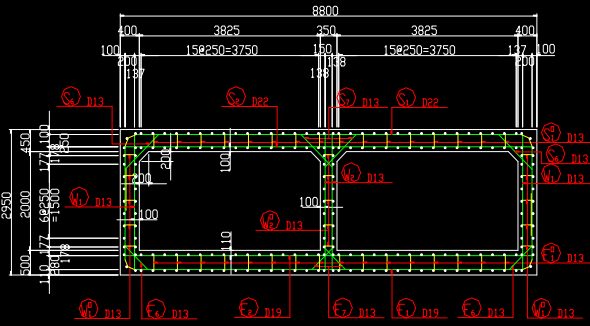
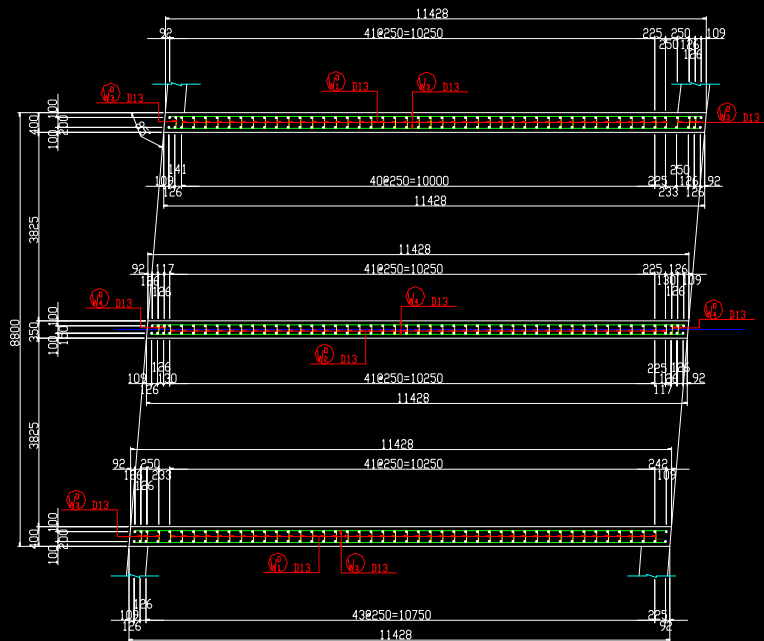


函渠工配筋图(1) s=1:50
[面体部]

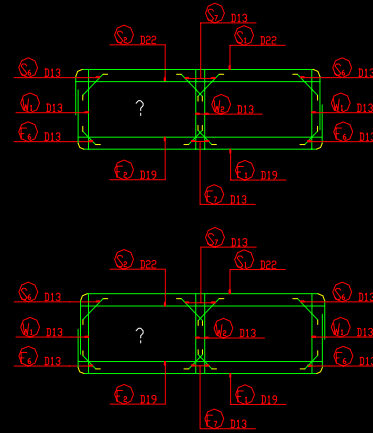
断面图
(1-1)



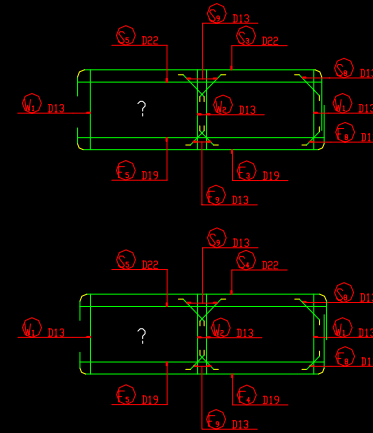
断面图
(2-2)



主鉄筋組立图
(標準部)
ctc250

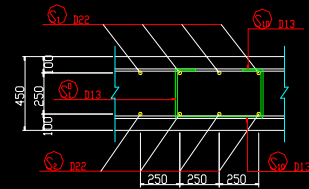


主鉄筋組立图
(斜角部)
ctc250

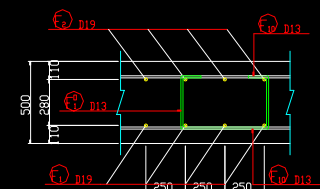


組立图
S=1:15

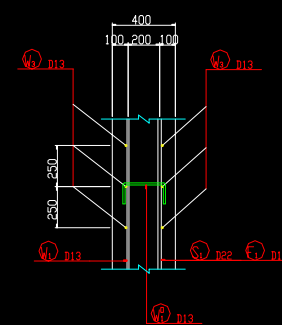
頂版部



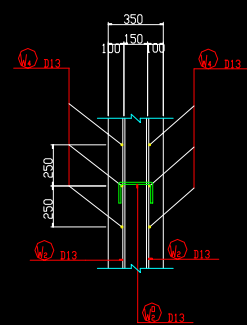
底板部



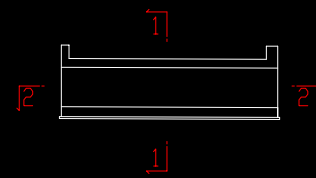
側壁部



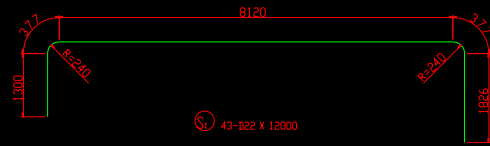
隔壁部



位置图



函渠工配筋圖(4) s=1:50
[箱体部]



S1 43-D22 X 12000



S2 43-D22 X 8600



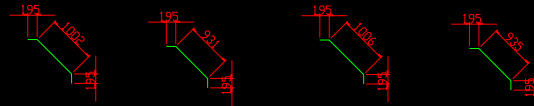
S3 4-D22 X 11500



S4 4-D22 X 11000



S5 8-D22 X 8630

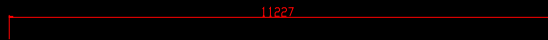


S6 86-D13 X 1390

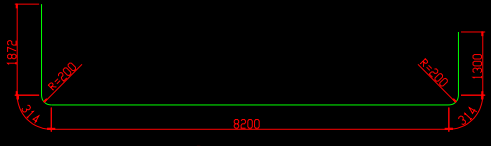
S7 86-D13 X 1320

S8 10-D13 X 1400

S9 12-D13 X 1330



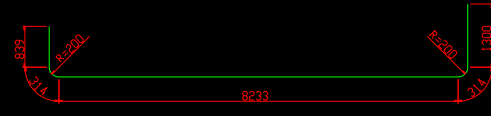
S10 76-D13 X 11230



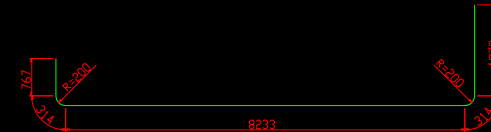
F1 43-D19 X 12000



F2 43-D19 X 8600



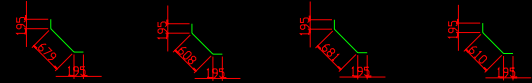
F3 4-D19 X 11000



F4 4-D19 X 11500



F5 8-D19 X 8630



F6 86-D13 X 1070

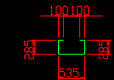
F7 86-D13 X 1000

F8 10-D13 X 1070

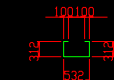
F9 12-D13 X 1000



F10 76-D13 X 11230



F174-D13 X 1310



F174-D13 X 1360

鉄筋質量表

種別	径	長さ (mm)	本数	単位質量 (kg/m)	一本当り質量 (kg/本)	質量 (kg)	補注
F ₁	D19	12000	43	2.25	27.00	1161	┌
F ₂	D19	8600	43	2.25	19.95	832	┌
F ₃	D19	11000	4	2.25	24.75	99	┌
F ₄	D19	11500	4	2.25	25.98	104	┌
F ₅	D19	8630	8	2.25	19.42	155	┌
F ₆	D13	1070	86	0.995	1.06	91	┌
F ₇	D13	1000	86	0.995	1.00	86	┌
F ₈	D13	1070	10	0.995	1.06	11	┌
F ₉	D13	1000	12	0.995	1.00	12	┌
F ₁₀	D13	11230	76	0.995	11.17	849	┌
						3400	
F ₁₇₄	D13	1360	174	0.995	1.95	235	┌
						235	
S ₁	D22	12000	43	3.04	36.48	1569	┌
S ₂	D22	8600	43	3.04	26.14	1124	┌
S ₃	D22	11000	4	3.04	34.96	140	┌
S ₄	D22	11000	4	3.04	33.44	134	┌
S ₅	D22	8630	8	3.04	26.24	210	┌
S ₆	D13	1390	86	0.995	1.38	119	┌
S ₇	D13	1320	86	0.995	1.31	113	┌
S ₈	D13	1400	10	0.995	1.35	14	┌
S ₉	D13	1330	12	0.995	1.32	16	┌
S ₁₀	D13	11230	76	0.995	11.17	849	┌
						4288	
S ₁₇₄	D13	1310	174	0.995	1.30	226	┌
						226	
W ₁	D13	2740	95	0.995	2.73	259	┌
W ₂	D13	2740	98	0.995	2.73	268	┌
W ₃	D13	11230	36	0.995	11.17	402	┌
W ₄	D13	11230	18	0.995	11.17	201	┌
						1130	
Y ₁	D13	460	210	0.995	0.46	97	┌
Y ₂	D13	400	105	0.995	0.40	42	┌
Y ₃	D13	460	18	0.995	0.46	8	┌
Y ₄	D13	400	10	0.995	0.40	4	┌
						151	
				合 計	D22	3177 kg	
					D19	2351 kg	
					D13	3902 kg	
				総質量		9430 kg	S3345